



Annual report 2015



Contact details Sri Lanka
Mr. Gerard de Jong
Tel.nr. +94-(0)779085850

Contact details the Netherlands
Mr. Gerard de Jong
Sterkenburg 7
3904 JS Veenendaal
Tel.nr. +31-(0)653159570
KvK Ayesha: 09155893

Table of Contents

Introduction

*Ayesha Foundation / Sri Lanka
Facts and Figures
Mission and Vision and Exit strategy
Method and Evaluation
Aim
Marketing, Fundraising and Awareness*

Review of the Projects

*Boossa School
Sahabandu Boys Home*

Financial statements

The Financial Annual Report 2015 is published separately on our website.

Introduction

Ayesha Foundation / Sri Lanka



The Ayesha Foundation was established in 2005 shortly after its founder, Gerard de Jong, went to Sri Lanka to help out at a children's home in Galle. Main goal of the foundation was to help institutionalized children and children in difficult family circumstances. Main projects were the support to the Boossa School and the Sahabandu Boys Home. As it is the priority of the foundation to work with local partners, for the Boossa school the cooperation started with the Boossa Aid Development Foundation and for the Sahabandu Boys Home with the Young Men's Buddhist Association.

The, earlier mentioned, founder travels four to five times per year to oversee the projects and to stay in continued dialogue with local authorities and the forementioned partners.

Now, the Ayesha Foundation has become an integral part of Carelanka in which the Dutch Lanka Friendship Foundation was also participating until December 31, 2015.

The presence of a Dutch country coordinator



Our Dutch former country coordinator, Miss Manon Kuin, managed the projects of Carelanka, Ayesha and DLFF for a number of years. She is educated as a development expert in the field of disabilities. In the past years she learned to speak Sinhalese and learned a lot about the Sri Lankan culture.

She worked on a voluntary part time base, with a payment of allowance. Her job description is multifaceted: It is her job to maintain the contacts with local institutions and government. She visits the projects on a regular base and keeps a strict eye on the organization's policy. She arranges courses given by local organizations.

The formal role of Manon Kuin within the foundation has ended as there was no real need anymore as local staff is now sufficiently trained and able to communicate with the board in The Netherlands via Skype and/or email. Manon Kuin will continue to visit the projects once a week as a volunteer without an allowance and maintain contact with the YMBA.

The Ayesha projects are overseen by the president of our local partner, the YMBA. Mr. Sarath Dias visits the two projects at least once a week and reports monthly via email. Gerard de Jong has meetings with him during his visits to monitor progress and to verify the financial administration.

Facts and Figures

Funding

Ayesha spend:

- On the Boossa school project the amount of € 9.265,--
- On the Sahabandu Boys home project the amount of € 948,--

The foundation generated sufficient income to cover the project expenses. For more detailed financial information, please read our Financial Report 2015.

None of the donations have been spent on office cost or travel expenses or fundraising. All donations were spent in the various projects. Dutch businesses offer their service for free as a manner of socially involved entrepreneurship. The traveller himself pays travel costs.

Visits

The Dutch voluntary manager travelled in total five times to Sri Lanka and had numerous meetings with authorities and local organizations.

This year residents and pupils of our projects could welcome over 25 of our sponsors on site. The sponsors reported to the foundation that the information, which was given in the past years, was a very good reflection of the reality they encountered in the projects. It is one of the objectives of the foundation to have our sponsors visit the projects if possible and report back with their findings. In 2015 added feedback of visitors to the news section of our website.

Dutch Board

In the Netherlands, the Ayesha Foundation is monitored by a board. The board has meetings four times per annum.

Mr. Piet van der Meulen	Chairman
Mr. Gerard de Jong	Treasurer
Mrs. Kirsten Giethoorn	Secretary
Mr. Kees Zachariasse	Member
Mrs. Suzanne van Emden	Member

Professionals

Ayesha is an organization of Dutch volunteers. The background of the volunteers is in the field of pedagogy, welfare or special needs. Ayesha's ambition is to find the knowledge in Sri Lanka itself. For that reason the Ayesha Dutch staff consists of two members only: the founders of the Ayesha Foundation and DLFF. Local professionals run the projects. These professionals have a background related to the field.

Nonetheless sometimes Dutch volunteers co-op with the local professionals. The main aim for these volunteers is to develop themselves. Ayesha gives them a chance to share knowledge vice versa.

Cooperation between local institutions and Ayesha

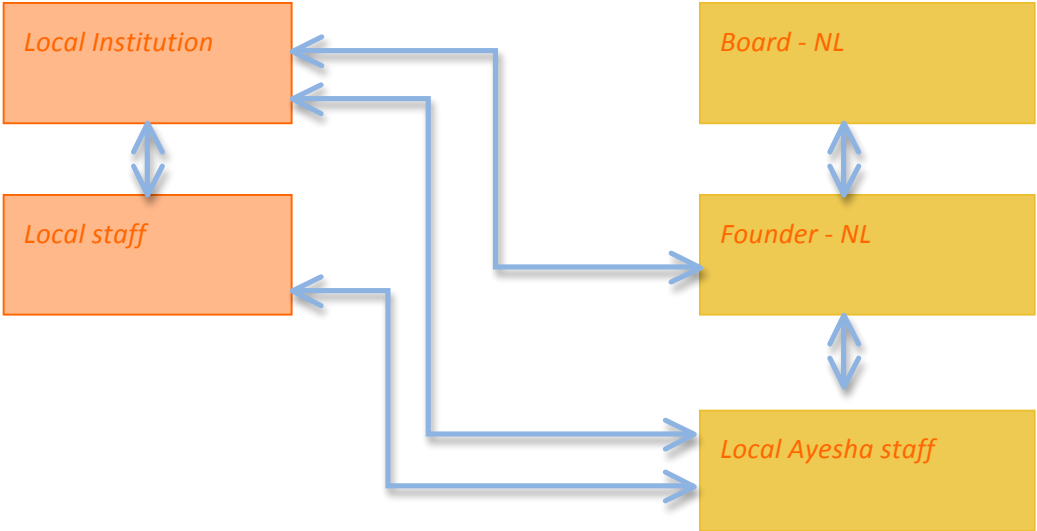
The local authorities have the final responsibility on the projects. Ayesha is only a guest.

The local institution has given Ayesha a task to give temporarily support to increase the living circumstances of the beneficiaries.

Communication lines

Local Management

Ayesha management



Mission

Ayesha's mission is to create a safe and devotedly community at the supported projects; a community in which elderly people, disabled women and pupils with a disability feel free to develop their talents and to be as they are.

Vision

Our vision is to offer personalized service at the projects, by sharing knowledge with the local staff, with respect for local customs and habits.

Exit strategy

Even before we start a project, we already have an exit strategy in mind. A project starts at request of the local authorities. The local authorities stay responsible for the project, its daily policy and the beneficiaries. Ayesha only takes temporarily responsibility for just predefined tasks. We will give those tasks back to the local responsible institution in the near future.

- Stage 1: Ayesha gives its full support by giving financial support and by sharing knowledge.
- Stage 2: The local institution and Ayesha determine a high degree of satisfaction about achieving the objects. We start with local funding in co-operation with the local authority.
- Stage 3: The project is given to the local authorities and Ayesha keeps an eye on it from a distance.

Method and Evaluation

All Ayesha projects have the aim to become independent from foreign support at some point in the future. The so-called exit strategy is defined in each project plan, which is constantly updated.

All projects are conducted in a manner that relates to the local culture and with respect for the local religion. To be able to do that Ayesha works closely with local organizations, which vary from project to project.

Progress in the projects is carefully monitored and matched with the objectives set out in the project plan. If necessary the project plan is adjusted. The objectives vary from project to project, but the heart of each project is to improve the quality of life for vulnerable people and help to open doors to a better future.

Marketing, Fundraising and Awareness

To be able to run the Ayesha projects in a professional way the foundation puts a lot of effort in fundraising in the Netherlands. Locally we create more and more awareness for the "Carelanka" brand as this is now functioning as an umbrella over Ayesha and DLFF .

Fundraising is done through a variety of local activities in churches, schools and companies down to the level of individual families. Through the years a growing group of ambassadors is helping the board members with local initiatives. Besides marketing and fundraising to help cover the cost of running the projects, our awareness program in the Netherlands is mutually important. We give lectures at schools, churches, service clubs or businesses about abilities of people with disabilities in Sri Lanka. We also provide the audience with common information about Sri Lanka. Our awareness program is an important issue of our voluntary work in the Netherlands, to create a community who is interested in, considerate towards and well educated about people living in another social-economical situation. Communication lines are set by website, Facebook, Linked-in, digital newsletter, paper flyers and our annual newsletter through regular mail. Fundraising in Sri Lanka is evenly important! One day, the Dutch interference will stop and the local organizations have to manage the source of income themselves. Ayesha gives a helping hand to start the fundraising. For each project we create a network of benefactors. The local projectmanagement and the partner organization are trained to maintain and grow this network and to keep a proper administration.

Review to the projects

Boossa School

Brief introduction

The Boossa School is founded in 1906 and serves the village of Boossa and its surroundings. Boossa is a relatively poor fishermen's village with mostly low educated families. The school does not get much support from the government in spite of the fact that it is a government school. The project started in 2005 and since then the school grew from 60 to 150 students. The local partner organization of the the Ayesha Foundation is the Boossa Aid Development Foundation. Initially the Ayesha foundation supported a large variety of activities of the school as a whole. Since the start of 2013 we have started to concentrate on the Special Education Unit with children with mental disabilities and with children with a hearing disorder.

Special education

The children are divided into two groups: the children with a mental disability and a group with children with a hearing disorder. The new classroom is being used by the last group as this classroom is a bit away from the rest of the school that produces a lot of noise.

- o Volunteers have trained the teachers in a variety of techniques that were new to them. As a result the teachers have not only improved their skills, but have also become more excited about helping the



- children to develop themselves more.
- o A speech therapist, Mrs. Anoma, has trained the teachers the basics off speech therapy as she is busy in many other projects. Speech therapy is a slow process but we continue to see enough progress to continue these lessons.
- o The school library is well maintained by a librarian and contains books, suitable for children with mental disabilities. The children use the computer classroom in small groups under guidance of the computer teacher.
- o The children of the Special Education Unit are maintaining a small piece of land in the schools vegetable garden.
- o We are very happy that 70% of the grade 11 children passed their O-level exams. That succesrate has not happened in decades.

Financial situation

- o As in the past years the foundation has received sufficient funds to run the Boossa school project. Major investments are done only as the funds are available. For example the Ayesha Foundation provided this year two football goal's on the school's sports ground through a dedicated fundraiser by one of the boardmember's.

2016

- o We expect both classes to grow further in 2016.
- o With the Boossa Aid Development Foundation we will work hard on finding local funding to work towards an exit strategy in the years to come.
- o As part of our Dutch awareness program we will continue to receive visitors in the school under the supervision of the principal of the school.

Sahabandu Elder's Home

Brief introduction

The Sahabandu boys home is founded in 1995 and is run by the Young Men's Buddhist Association but falls under the authority of the department of probation and childcare. We are involved since 2006. Early January 2014 the home is transformed into an Elder's Home in close cooperation with the District Social Service and our local partner, YMBA. This was done because of the focus of the government on de-institutionalization of children. The last children were transferred to a home in Baddegama.

Project description

- o Over the years all buildings on the grounds have been renovated or renewed. At this point in time it is only a matter of maintenance and therefore the financial burden is a lot less the earlier years.
- o Our prime goal is to create a safe living environment for the elderly. The matron, Mrs. Jayanthi, and her assistant coordinate the work involved. In total 17 female elderly are now living in the Sahabandu Elder's home.

Financial situation

- As in the past years the foundation has received sufficient funds to run the Sahabandu project. The cost is minimal as the YMBA covers most expenses now. The matron is successfully raising funds locally.

2016

- Our goal for this year is mainly to activate the elder's, as they have been very passive so far. We will train Mrs. Jayanthi to be able to organize activities suitable for the age group.